

Example

CFX96 (BIO-RAD)

Sample

Fifty copies of each of the seven mycoplasma standard DNAs listed in JP 17

PCR program

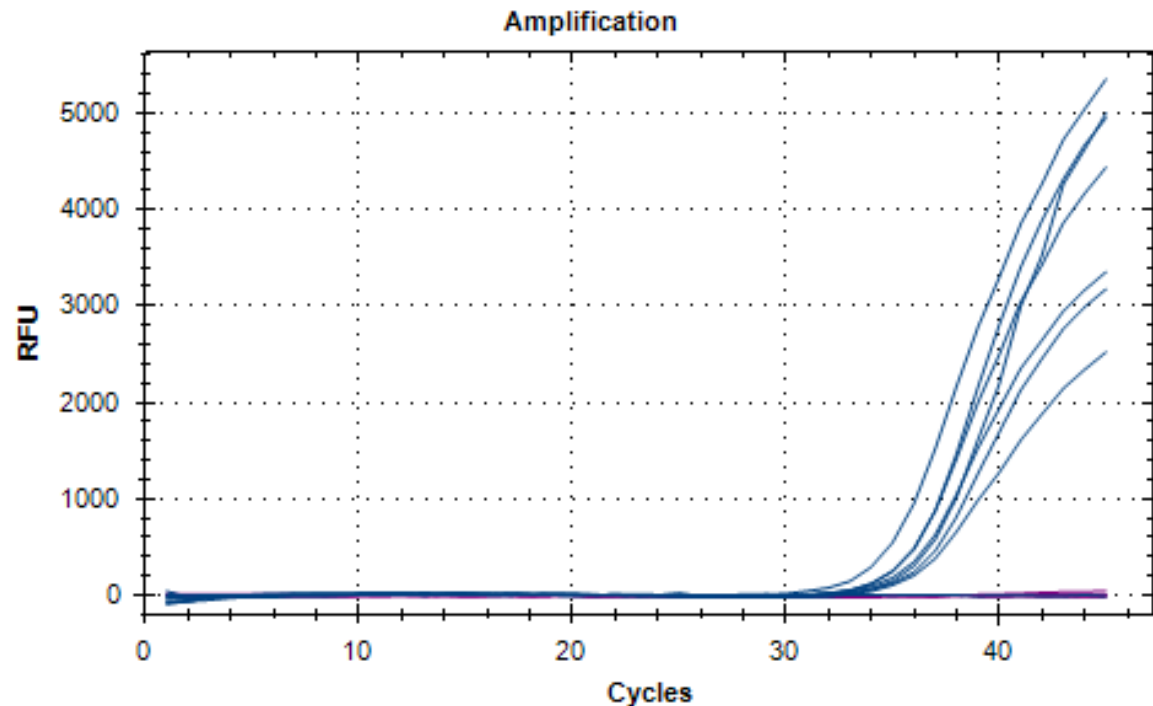
95°C 10sec

98°C 3sec
60°C 1sec] X 45 cycle

Analysis method

2nd derivative max

Sample name	C _T Mean (N=3)	C _T SD (N=3)
<i>Acholeplasma laidlawii</i>	36.24	0.48
<i>Mycoplasma arginini</i>	34.25	0.08
<i>Mycoplasma fermentans</i>	33.53	0.27
<i>Mycoplasma pneumoniae</i>	35.13	0.58
<i>Mycoplasma orale</i>	35.55	0.60
<i>Mycoplasma hyorhinis</i>	34.98	0.13
<i>Mycoplasma salivarium</i>	34.56	0.18
Negative control	0.00	0.00



Example

GVP9600 (SHIMADZU)

Sample

Fifty copies of each of the seven mycoplasma standard DNAs listed in JP 17

PCR program

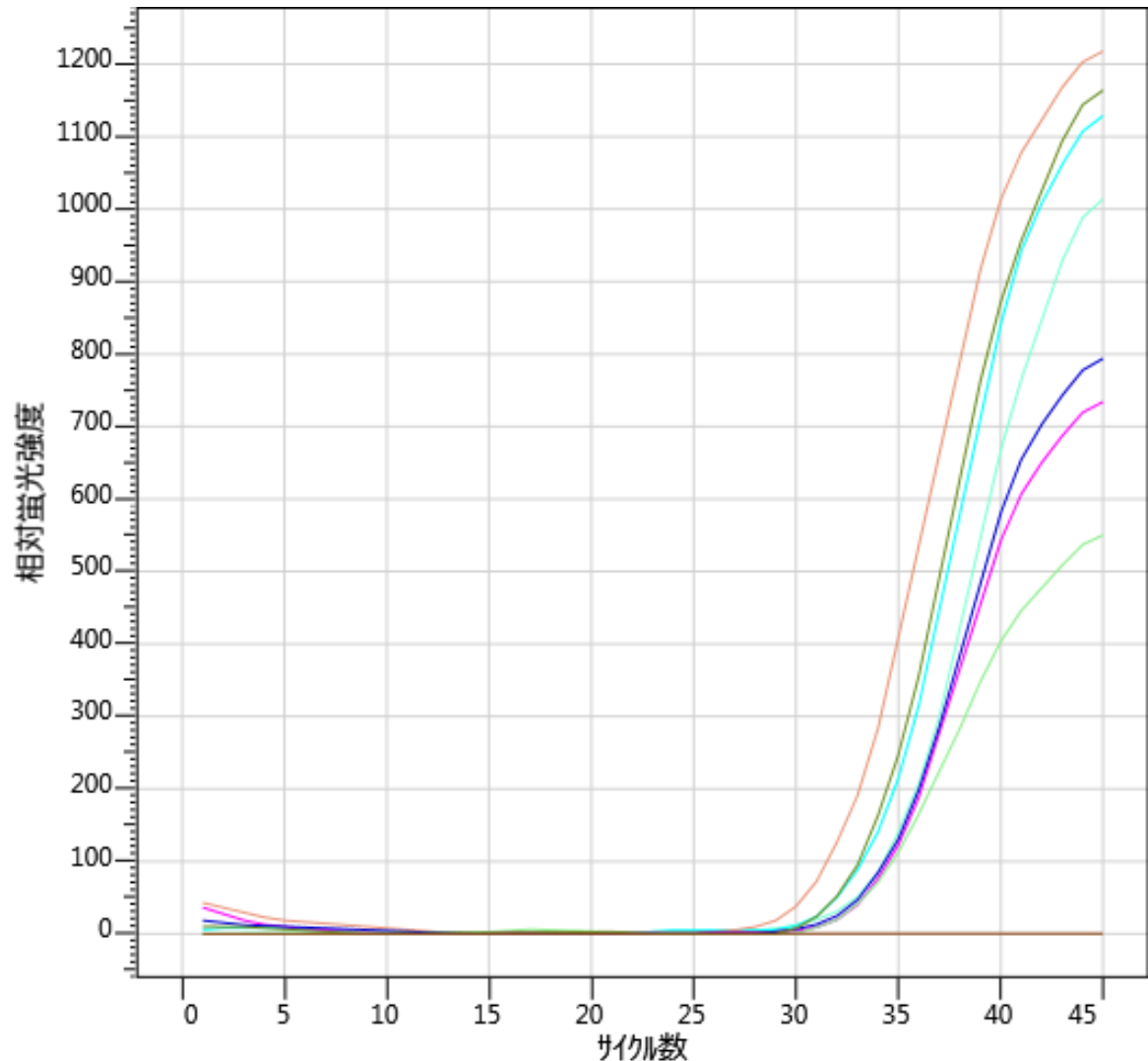
95°C 10sec

95°C 5sec
60°C 5sec] X 45 cycle

Analysis method

2nd derivative max

Sample name	C _T Mean (N=3)	C _T SD (N=3)
<i>Acholeplasma laidlawii</i>	34.68	0.05
<i>Mycoplasma arginini</i>	33.94	0.29
<i>Mycoplasma fermentans</i>	31.91	0.05
<i>Mycoplasma pneumoniae</i>	34.62	0.88
<i>Mycoplasma orale</i>	35.07	0.10
<i>Mycoplasma hyorhinis</i>	34.77	0.36
<i>Mycoplasma salivarium</i>	32.99	0.44
Negative control	0.00	0.00



Example

LightCycler96 (Roche)

Sample

Fifty copies of each of the seven mycoplasma standard DNAs listed in JP 17

PCR program

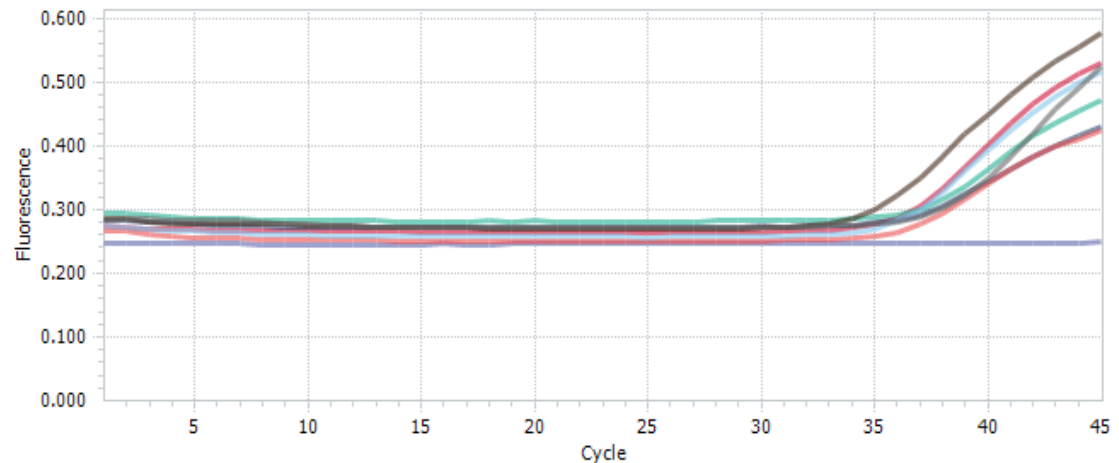
95°C 10sec

95°C 5sec
60°C 5sec] X 45 cycle

Analysis method

Single Threshold

Sample name	C _T Mean (N=3)	C _T SD (N=3)
<i>Acholeplasma laidlawii</i>	34.29	0.93
<i>Mycoplasma arginini</i>	34.70	0.29
<i>Mycoplasma fermentans</i>	33.58	0.37
<i>Mycoplasma pneumoniae</i>	35.91	0.36
<i>Mycoplasma orale</i>	36.18	0.31
<i>Mycoplasma hyorhinis</i>	36.04	0.34
<i>Mycoplasma salivarium</i>	34.89	0.61
Negative control	0.00	0.00



Example

LightCycler480 (Roche)

Sample

Fifty copies of each of the seven mycoplasma standard DNAs listed in JP 17

PCR program

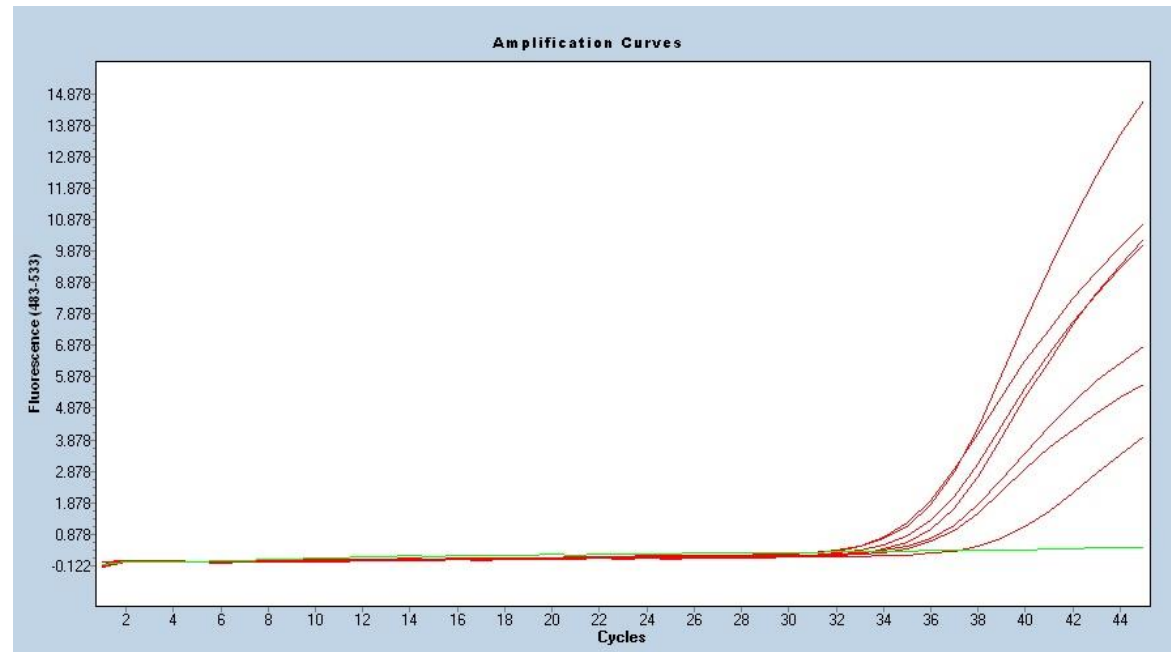
95°C 10sec

95°C 5sec
60°C 5sec] X 45 cycle

Analysis method

2nd derivative max

Sample name	C _T Mean (N=3)	C _T SD (N=3)
<i>Acholeplasma laidlawii</i>	35.72	0.17
<i>Mycoplasma arginini</i>	35.65	0.40
<i>Mycoplasma fermentans</i>	34.72	0.15
<i>Mycoplasma pneumoniae</i>	35.70	0.42
<i>Mycoplasma orale</i>	37.14	1.67
<i>Mycoplasma hyorhinis</i>	36.08	0.39
<i>Mycoplasma salivarium</i>	35.32	0.42
Negative control	0.00	0.00



Example

LightCycler480 (Roche)

Sample

Fifty copies of each of the seven mycoplasma standard DNAs listed in JP 17

PCR program

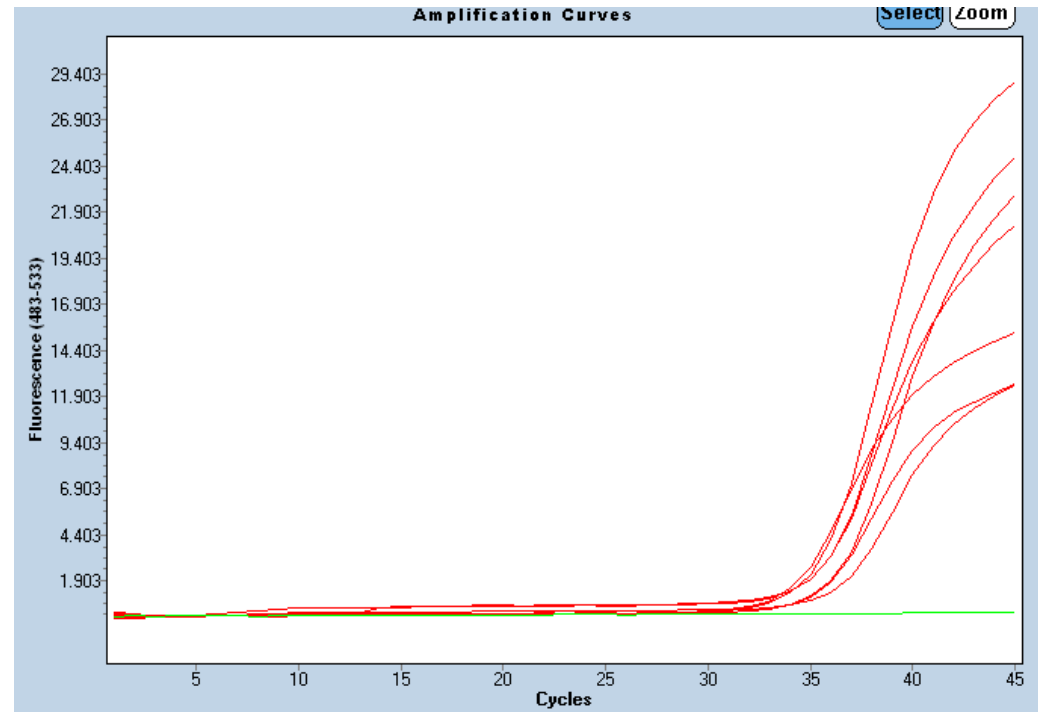
95°C 10sec

95°C 5sec
60°C 30sec] X 45 cycle

Analysis method

2nd derivative max

Sample name	C _T Mean (N=3)	C _T SD (N=3)
<i>Acholeplasma laidlawii</i>	35.09	0.19
<i>Mycoplasma arginini</i>	35.28	0.35
<i>Mycoplasma fermentans</i>	35.01	0.23
<i>Mycoplasma pneumoniae</i>	33.59	0.18
<i>Mycoplasma orale</i>	36.65	0.50
<i>Mycoplasma hyorhinis</i>	35.39	0.21
<i>Mycoplasma salivarium</i>	36.07	0.31
Negative control	0.00	0.00



Example

ABI 7500 FAST (Thermo Fisher Scientific)

Sample

Fifty copies of each of the seven mycoplasma standard DNAs listed in JP 17

PCR program

95°C 10sec

95°C 5sec

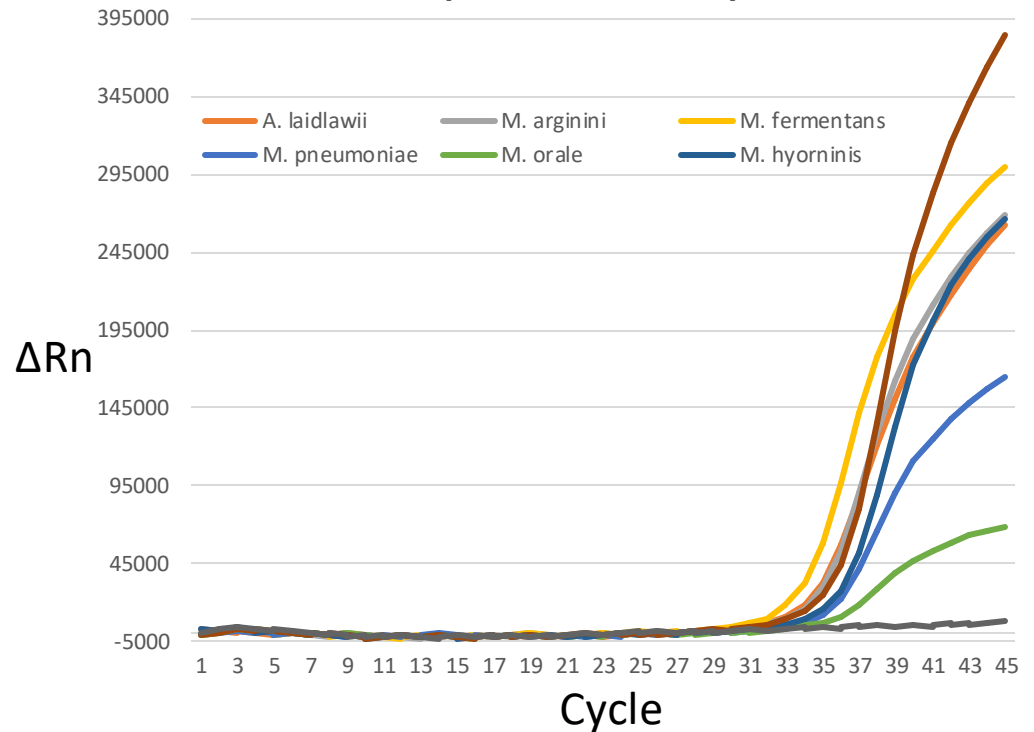
60°C 25sec] X 45 cycle

Analysis method

Single Threshold

Sample name	C _T Mean (N=3)	C _T SD (N=3)
<i>Acholeplasma laidlawii</i>	32.33	1.40
<i>Mycoplasma arginini</i>	32.61	0.84
<i>Mycoplasma fermentans</i>	31.64	1.00
<i>Mycoplasma pneumoniae</i>	34.29	0.65
<i>Mycoplasma orale</i>	35.17	0.99
<i>Mycoplasma hyorhinis</i>	33.80	0.59
<i>Mycoplasma salivarium</i>	32.78	0.86
Negative control	0.00	0.00

Amplification plot



Example

ABI 7500 (Thermo Fisher Scientific)

Sample

Fifty copies of each of the seven mycoplasma standard DNAs listed in JP 17

PCR program

95°C 10sec

95°C 5sec
60°C 32sec] X 45 cycle

Analysis method

Single Threshold

Sample name	C _T Mean (N=3)	C _T SD (N=3)
<i>Acholeplasma laidlawii</i>	34.63	0.26
<i>Mycoplasma arginini</i>	35.14	1.27
<i>Mycoplasma fermentans</i>	33.20	0.32
<i>Mycoplasma pneumoniae</i>	34.62	0.26
<i>Mycoplasma orale</i>	36.05	0.42
<i>Mycoplasma hyorhinis</i>	36.30	0.82
<i>Mycoplasma salivarium</i>	35.72	0.53
Negative control	0.00	0.00



Selected Detector: Myco1; Start: (Auto); End: (Auto); Threshold: 11967.20019531
Well(s): A1,B1,C1,D1,E1,F1,G1,H1
Document: 20170306-Mycfinder-test2 (Standard Curve)

Example

StepOne Plus (Thermo Fisher Scientific)

Sample

Fifty copies of each of the seven mycoplasma standard DNAs listed in JP 17

PCR program

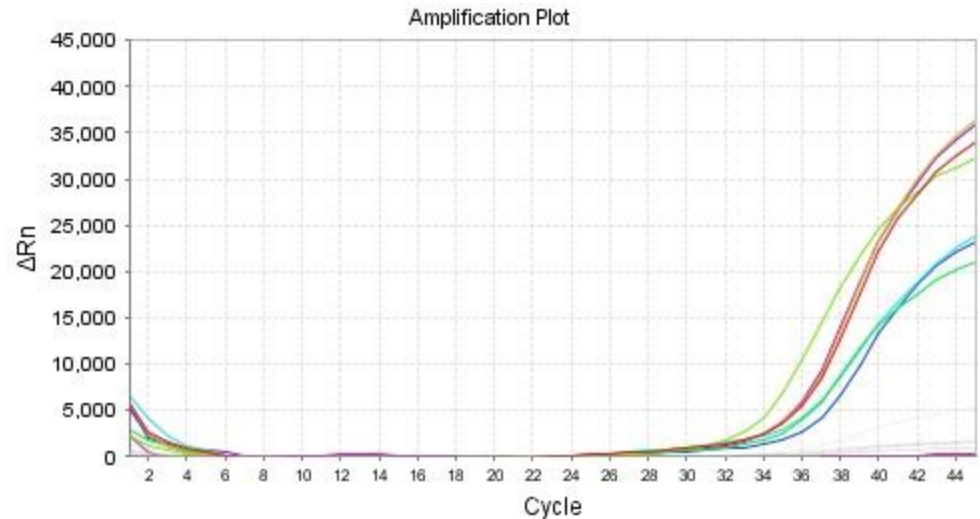
95°C 10sec

98°C 3sec
60°C 10sec] X 45 cycle

Analysis method

Single Threshold

Sample name	C _T Mean (N=3)	C _T SD (N=3)
<i>Acholeplasma laidlawii</i>	35.18	0.18
<i>Mycoplasma arginini</i>	35.07	0.32
<i>Mycoplasma fermentans</i>	34.02	0.16
<i>Mycoplasma pneumoniae</i>	36.18	0.32
<i>Mycoplasma orale</i>	36.46	0.46
<i>Mycoplasma hyorhinis</i>	36.89	0.29
<i>Mycoplasma salivarium</i>	35.34	0.26
Negative control	0.00	0.00



Example

QuantStudio5 (Thermo Fisher Scientific)

Sample

Fifty copies of each of the seven mycoplasma standard DNAs listed in JP 17

PCR program

95°C 10sec

98°C 3sec

60°C 15sec] X 45 cycle

Analysis method

Single Threshold

Sample name	C _T Mean (N=3)	C _T SD (N=3)
<i>Acholeplasma laidlawii</i>	34.70	0.43
<i>Mycoplasma arginini</i>	32.11	0.33
<i>Mycoplasma fermentans</i>	33.41	0.51
<i>Mycoplasma pneumoniae</i>	33.39	0.19
<i>Mycoplasma orale</i>	33.34	0.26
<i>Mycoplasma hyorhinis</i>	32.73	0.13
<i>Mycoplasma salivarium</i>	33.47	0.24
Negative control	0.00	0.00

Amplification Plot

